

Alaska Department of Fish and Game

Habitat Section
Southeast Region



111-40-10690 Tributary 2

ADDITION

Water body name:

Quad: Juneau A-2

Upper Reach Latitude: 58.226293 **Longitude:** -134.502149

Lower Reach Latitude: 58.226662 **Longitude:** -134.501315

Survey date: 5/9/2022

Species & Lifestage:

Survey crew: JL, DK, RR

Findings: We surveyed this uncataloged stream using a backpack electrofisher and GPS and captured juvenile coho salmon (Table 1; Figures 1, 2).

Recommendations: Add this uncataloged stream to the anadromous waters catalog for rearing coho salmon (Figure 3).

Nomination: Pending

Table 1.–111-40-10690 tributary 2 survey data.

Waypoint	Latitude	Longitude	Notes	Stream Width ft	Stream Substrate	Habitat Features	Gradient %	Sample Effort	Sample Results
98	58.226553	-134.501271	Tributary on river-right.	10-12	Large Gravel Sand		0-1		
95	58.226297	-134.502169	Small tributary with isolated pools.	10-12	Fine Organic Cobble	Large Pool	1-2	EF	2 CO
96	58.226095	-134.503143	Rootwad falls 2-3' tall. Channel has low flow and algae.		Fine Organic		0-1	EF	No Fish



Figure 1.–Tributary 2 near confluence with main channel at waypoint 98.



Figure 2.–Tributary 2 with low flow and algae at waypoint 96.

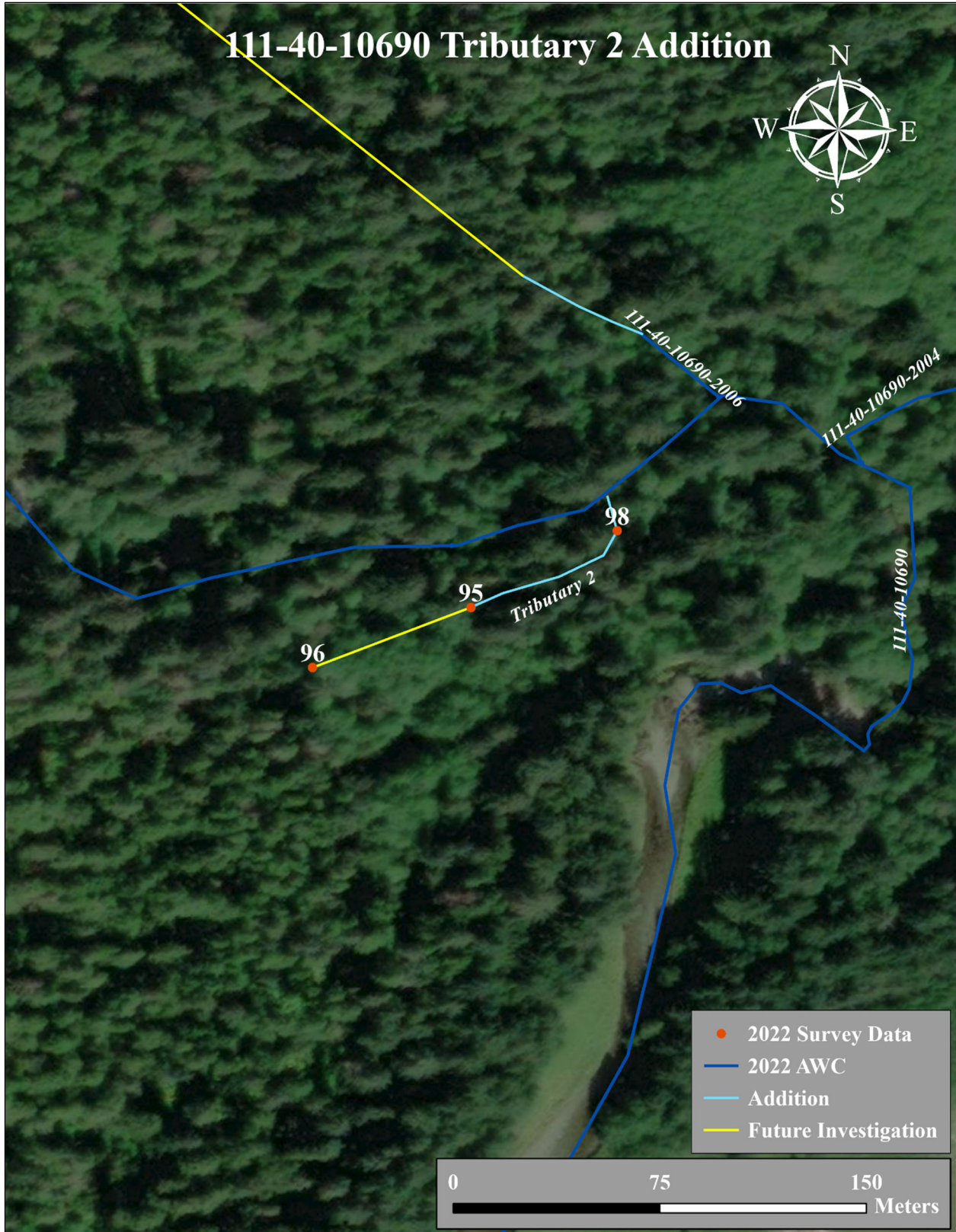


Figure 3.-111-40-10690 tributary 2 addition map.